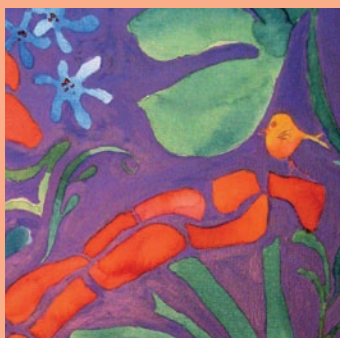


Thursday 22 to Friday 23, October 2009
Adelaide Convention Centre, South Australia

4th International Conference
on Creative Expression,
Communication and Dementia



ARTS AGEING and CREATIVITY

UNLOCKING THE POTENTIAL

Hosted by

The Society for the Arts in
Dementia Care (Australia) Inc

Aged and Community
Services SA & NT Inc

REGISTRATION BROCHURE

EARLY BIRD REGISTRATION CLOSES
WEDNESDAY, 9 SEPTEMBER 2009

SAVE TIME AND REGISTER ONLINE
WWW.ALLOCCASIONSGROUP.COM/CECD09

Major Sponsors



Australian Government
Department of Health and Ageing

HEALTH
SUPER



Government of South Australia
Arts SA



Domiciliary Care SA



Arts Access Australia



Other Sponsors



CONFERENCE MANAGER

Shanna Sheldrick

Manager, Conventions and Events
All Occasions Management
41 Anderson Street
Thebarton SA 5031
Telephone: +61 8 8125 2200
Facsimile: +61 8 8125 2233
Email: shanna@aomevents.com
www.alloccasionsgroup.com/CECD09

CONFERENCE ORGANISING COMMITTEE

Jane Pickering \ *Chair, Conference Organising Committee / Executive Director*
Domiciliary Care SA
Email: Jane.Pickering@dfc.sa.gov.au

Alan Graham \ *Chief Executive Officer*
Aged & Community Services SA & NT Inc
Email: executive@agedcommunity.asn.au

Hilary Lee \ *Chair*
The Society for the Arts in Dementia Care (Australia) Inc
Email: hilarylee@bigpond.com

Fiona Dunt \ *Project Officer Living Well*
ECH Inc
Email: fdunt@ech.asn.au

Susan Emerson \ *Director Care Environments and Service Strategy*
Helping Hand Aged Care Inc
Email: semerson@helpinghand.org.au

Eileen King \ *Management Support Officer*
Aged & Community Services SA & NT Inc
Email: mso@agedcommunity.asn.au

Maree MacLachlan \ *Secretary*
The Society for the Arts in Dementia Care (Australia) Inc
Email: mareefm@westnet.com.au

Dr Angelica Orb \ *Board Member*
The Society for the Arts in Dementia Care (Australia) Inc

Neville Stephens \ *Residential Services Manager*
Aged & Community Services SA & NT Inc
Email: residential@agedcommunity.asn.au

Katherine Tumes \ *Art Therapist*
UnitingCare Wesley Adelaide
Email: katherine.tumes@ucwesleyadelaide.org.au

Sharon van Kerckhoven \ *Lifestyle & Volunteer Coordinator*
James Brown Memorial Trust
Email: lifestyle@jamesbrown.org.au

Dr Dalia Gottlieb-Tanaka \ *Advisor to the Committee*
Society for the Arts in Dementia Care, Vancouver, British Columbia
Email: daliagt@shaw.ca

INVITATION

On behalf of the Conference hosts, Aged and Community Services SA & NT Inc. and the Society for the Arts in Dementia Care (Australia) Inc. I am pleased to invite you to attend the 4th International Conference on Creative Expression, Communication and Dementia.

There is growing evidence that demonstrates that creative arts programs provide many therapeutic benefits as well as adding to the quality of life for seniors living in aged care facilities or the community. The arts have an important value for nurturing the spirit, unlocking the human potential, boosting self esteem and providing meaningful connection with others.

The conference provides a great opportunity to promote the value of the arts in aged and community care, and for people working in the aged and community care sector and in the arts sector to gain exposure to high profile international experts in the field. It will provide an excellent opportunity for delegates to exchange ideas about the positive value of active participation in the creative arts for older people and gain insights into creative approaches that can improve the lives of older people.

This event is the first of its kind in Australasia and promises to be stimulating and informative in bringing together performing artists, seniors, health practitioners, international experts, researchers, managers and policy makers to discuss service models of excellence and to highlight the positive impact of arts in aged and community services.

We look forward to meeting you at the 4th International Conference on Creative Expression, Communication and Dementia and hope you enjoy all this event has to offer.

Jane Pickering \ Chair, Conference Organising Committee



FEATURED ARTIST

Lucy Pilmore's artwork features in the design of this Registration Brochure. Lucy currently lives in Aldersgate Nursing Home and started painting in 1976 after losing her husband. When asked how painting makes her feel, Lucy stated "I become lost in it; lose myself all together. I feel that I am in another world. It gives me fulfilment and joy".

4TH
INTERNATIONAL
CONFERENCE
ON CREATIVE
EXPRESSION,
COMMUNICATION
AND DEMENTIA



Australian Government
Department of Health and Ageing

HEALTH
SUPER

Major Sponsors



Government of South Australia
Arts SA



Domiciliary Care SA



Arts Access Australia



Other Sponsors

ABOUT THE SOCIETY FOR THE ARTS IN DEMENTIA CARE (AUSTRALIA) INC.

The mission of the Society is to provide an interdisciplinary forum for creative expression in dementia care and disseminate knowledge and establish ties with dementia care organisations worldwide. This organisation grew out of the First International Conference on Creative Expression, Communication and Dementia, Vancouver, 2005 that brought academics and practitioners together to discuss topics of mutual interest.

The Society is based originally on Dr. Dalia Gottlieb-Tanaka's PhD on creativity, dementia and the therapeutic environment. The Society serves as an educational and networking tool, hosts international conferences and workshops, brings together academic research and practical knowledge, encourages collaboration between the medical profession and the creative arts. Hilary Lee registered the Society in Western Australia in 2006 and has established an executive board, and eventually the Society will be open to members Australia wide. The Society web site is: www.cecd-society.org

ABOUT AGED & COMMUNITY SERVICES SA & NT INC.

Aged & Community Services SA & NT Inc (ACS) is the major peak aged and community care sector association in South Australia and the Northern Territory. It represents the majority of community care, residential care and retirement housing organisations that provide aged care services to an estimated 100,000 older South Australians and Northern Territorians, their carers and their families. ACS has more than 130 members that provide over 600 separate services.

ACS is an affiliate of Aged and Community Services Australia, along with similar organisations in each state and territory. Membership of ACS is primarily composed of church, charitable, not for profit, community, State and Local Government aged and community care service providers.

ACS SA&NT strives to provide all members with practical information and support in operating aged care facilities and community care services, in what is a dynamic, challenging and rapidly growing service sector. ACS SA&NT assists its members by promoting their work to the community and to Governments, and by keeping them informed of matters that affect their operations.

CONFERENCE THEME

Arts, Ageing & Creativity – Unlocking the Potential

The program will focus on the value of providing opportunities for active participation in the creative arts to seniors living in the community and residential care.

Sub themes within the program are:

1. Working towards Best Practices in Arts and Ageing
2. Evaluating Creative Expression Programs
3. Expressing Culture and Spirituality through the Arts
4. Unlocking the Potential within an Organisation



Australian Government
Department of Health and Ageing

HEALTH
SUPER

Major Sponsors



Government of South Australia
Arts SA



Domiciliary Care SA



Arts Access Australia



Other Sponsors



ADELAIDE THE HOST CITY

Adelaide is a city of just over 1.1 million people nestled between Gulf St Vincent and the Mt Lofty ranges. Based on Colonel Light's town plan, the city was first settled in 1836. The 'square mile' town grid is surrounded by parklands making it unique in the world.

The city and many of the inner suburbs still retain much of the architectural charm of earlier periods. A stroll through North Adelaide is a must on any visitor's program. The cultural precinct on North Terrace, boasting the Art Gallery, SA Museum, Adelaide University buildings and the State Library, rivals any of the world's grand boulevards for architectural style and ambience.

In recent years Adelaide has rightly become known as the Festival state – a reputation it richly deserves.

ADELAIDE CONVENTION CENTRE THE HOST VENUE

North Terrace, West End
Adelaide SA 5000

The Adelaide Convention Centre (ACC), which has an international reputation par excellence, also affords Conference goers magnificent vistas looking towards North Adelaide with the River Torrens and Adelaide Oval in the foreground.

The Centre is conveniently located in the Central Business District and is a short stroll from various city attractions – Rundle Mall, the 'cappuccino strip' of Rundle Street east and the Gouger Street restaurant precinct – as well as the cultural attractions mentioned earlier.

Within very close proximity of the Centre is a wide array of hotel and apartment style accommodation.



PRE-CONFERENCE WORKSHOPS

Workshops – Wednesday 21 October
Venues to be advised

Workshop 1

THE CEAA: A TOOL FOR ASSESSING CREATIVE-EXPRESSIVE ABILITIES IN SENIORS WITH DEMENTIA

Dr Dalia Gottlieb-Tanaka and Hilary Lee

Time: 8.30am – 12.30pm

Cost: \$80.00 per person, morning tea included

Maximum of 100 participants

The tool was developed by a team of researchers, Dalia Gottlieb-Tanaka, PhD and Peter Graf, PhD from Canada and Hilary Lee, MSc from Australia. The Creative-Expressive Abilities Assessment (CEAA) tool was designed for obtaining in-depth information about expressive abilities of seniors with dementia. It is easy to use and provides a convenient method for quantifying changes in behaviour. The tool can be used, for example, for comparing the effectiveness of creative activity programs or to ensure the successful matching of activities to the unique needs of each client or of a group. Its aim is to assess the creative expression abilities of people with mild to severe dementia. In the first part of the session we will discuss the practical and theoretical considerations that led to the development of the tool, while the second part of the session covers hands-on demonstration and training of the use on the tool. This workshop is ideal for creative expression facilitators, researchers, administrators of care facilities, caregivers as well as family members. For more information on the tool and its benefits, please log on to www.dementia-activities.com

Workshop 2

UNDERSTANDING CREATIVITY AND DEMENTIA: PLANNING FOR CREATIVE EXPRESSION ACTIVITIES PROGRAMS

Dr. Dalia Gottlieb-Tanaka

Time: 1.30pm – 5.30pm

Cost: \$80.00 per person, afternoon tea included

Maximum of 100 participants

This workshop offers a theoretical basis for the Creative Expression Activities Program that was developed by Dr. Dalia Gottlieb-Tanaka. It is based on a variety of planned and spontaneous activities addressed to clients with mild to severe dementia. It is also based on solid academic research and years of practical experience. Workshop participants will learn new ideas that will enrich their own work as facilitators. It will include topics such as health and family matters, fears, anxieties, achievements, life and death issues, food, arts, pets, seasonal celebrations and holidays and how they can materialize into creative expressions. The workshop emphasizes the use of clients' present abilities that may encourage them to tap into their past life histories and express their feelings creatively through drawings, writing poems, storytelling, music and reminiscing.

Workshop 3**HEARTS, HANDS AND VOICES:
CELEBRATING LIFE WITH SINGING AND CREATIVE ARTS**

Kirstin Robertson-Gillam

Time: 8.30am – 12.30pm

Cost: \$80.00 per person, morning tea included

Maximum of 40 participants

Creative expressions can enable a person to express their spontaneity, joy and spirituality through singing, music making, art work, imagery and visualisation. The timeless dimensions beyond the physical can emerge where meaning and purpose are discovered. Oliver Sachs said “music of the right kind can serve to orient and anchor a (person) when nothing else can” (2007, Musicophilia). This workshop explores elements of silence versus sound via meditation, Tibetan singing bowls, shamanic drumming, vocal toning, singing rounds, chants and songs as well as drawing, dancing and group discussions. (Participants are asked to bring a mat for meditation, pastels or oil crayons for drawing and voices for singing.) Having fun is a prerequisite for this workshop.

Workshop 4**CREATIVITY ENLIVEN THE SPIRIT. LIVE, LAUGH AND EXPRESS
IN THIS LAUGHTER BOSS TRAINING WORKSHOP**

Dr Peter Spitzer

Time: 9.00am – 5.00pm

Cost: \$140.00 per person, morning tea, lunch & afternoon tea included

Maximum of 40 participants

LaughterBoss originates from the philosophy that laughter is the best medicine. The positive power of humour is well-known and bringing humour and laughter into aged care assists staff to more creatively meet quality of life and psychosocial care issues of residents. The LaughterBoss is also well placed to help reduce staff stress and improve staff morale. The LaughterBoss is modern day equivalent of the court jester. They bring together the art and the medicine. Ideal candidates for training are staff members who have intimate knowledge of residents, families and staff as well as a thorough understanding of the environment and culture of the facility. Training to become a LaughterBoss does not make the applicant a professional performer. They remain a healthcare professional who has developed creative skills in introducing humour and laughter into their facility. The NHMRC 3 year humour therapy in RACF grant will also be discussed and reviewed. This is an experiential training workshop so bring along your funny bone.

CONFERENCE PROGRAM

Thursday 22 October 2009

8.00am – 8.45am	Registration (and clown doctors)
8.45am – 9.00am	Welcome to Country Welcome to Conference , Hilary Lee, <i>Chair, the Society for the Arts in Dementia Care (Australia) Inc.</i>
9.00am – 9.15am	Official Opening The Hon John Hill MP, <i>Minister for Health & Minister Assisting the Premier in the Arts</i>
9.15am – 10.30am	Plenary Session – “You have given me freedom and it tastes so good” Creativity and dementia: are we doing enough?, Dr Dalia Gottlieb-Tanaka, (Keynote) – “Exploring the Therapeutic Value of Humour”, Dr Peter Spitzer
10.30am – 11.00am	Morning tea
11.00am – 12.30pm	Plenary Session – “Expression of Hearts and Voices: Creative Spirited Living for People with Dementia”, Kirstin Robertson-Gillam, PHD CANDIDATE (UWS), MA (HONS), MCOUNS. – “Soul Journey: Looking Forward, Looking Back”, Joanna Jaaniste – “Creating Images of Safety: Using Art Therapy to aid individuals living with dementia to deal with anxiety & depression” Pat Baines, <i>Alzheimer's Australia Tasmania</i>
12.30pm – 1.30pm	Lunch Proudly Sponsored by Tena.



Theme 1

Working Towards
Best Practice

1. Judi Parkinson,
Queensland Artworkers Alliance
The Development of Non-verbal
Communication Tools for use with
People with Dementia and Alzheimer's
Disease.
2. Alexandra Dyer, *One Care*
Unlocking the Potential of Residents
Living with Dementia through Diverse
Music Therapy Projects.
3. Ruth Bright, *Dementia isn't all
Alzheimer's.*

Theme 2

Expressing Culture
and Spirituality

1. Eleanor Kennett-Smith, *ECH Inc.*
Arts for All: An Arts Inclusion Project
for people living with Dementia in the
Community and High School Students.
2. Gail Kovatseff,
*Media Resource Centre &
Mercury Cinema*
Seniors on Screen Program.
3. Glenn Hayden,
Urban Myth Theatre of Youth
Out of the Mist: A Collaboration
between Urban Myth Theatre of Youth,
Life Care & Parkrose Village.

Theme 3

Unlocking the
Organisational Potential

1. Kirsten James, *Dementia Behaviour
Management Advisory Service*
The Art of Implementation – Keys to
Manifesting a Creative Culture.
2. Julie McAdam,
Program Director, MACART
Chocolate Works just as well as
Art anyway.
3. Deborah Treherne, *Alzheimer's
Australia South Australia*
The Virtual Music Instrument.

- 3.00pm – 3.30pm Afternoon tea
- 3.30pm – 4.10pm **Plenary Session**
- “A Framework for Creative Expression Programs”,
Jane Verity and Hilary Lee
- 4.10pm – 5.40pm **Kesen Boke Ichiza Theatre Group performance**
Discussion of themes (facilitated by Dr Yukimi Uchide)
- 5.45pm – 7.30 pm **Conference Art Exhibition**
Proudly sponsored by Actwell Technology.
- Welcome by Hon. Jennifer Rankine MP, *Minister for Ageing*
Opening by Mr Russell Starke, *Director Greenhill Gallery*
Performance by the Tutti Ensemble www.tutti.org.au. This project is
proudly supported by the Richard Llewellyn Arts & Disability Trust.



Free Evening

Friday 23 October 2009

- 8.00am – 8.45am **Registration**
- 8.45am – 8.50am **Welcome Day 2**
Alan Graham, *Chief Executive Officer Aged and Community Services SA&NT*
- 8.50am – 10.30am **Plenary Session** (Policy focus)
- Mr Steve Georganas MP, *Representing the Minister for Ageing, Member for Hindmarsh*
 - Representative from Government (To be advised)
 - “Arts in Health at Flinders Medical Centre; Using the Arts to Promote the Health and Well Being of Aged Care Patients in a Hospital Setting”, Sally Francis
 - “Unlocking the Potential within an Organisation”, Colin Bahn,
Jan Clark & Yvonne Goldman, Maurice Zeffert
- 10.30am – 11.00am **Morning Tea**
- 11.00am – 12.30pm **Plenary Session** (International perspectives)
- “The status of creative expression activities programs in British Columbia, Canada, in adult care facilities”, Dr Dalia Gottlieb-Tanaka
 - “A creative approach to dementia care in Japan”
Dr Yukimi Uchide
- 12.30pm – 1.30pm **Lunch**
- 1.30pm – 3.00pm **Panel Discussion**
Facilitated by Denise Picton, *Managing Director, Oz Train Pty Ltd*
(Representatives covering arts, provider, policy and other interests.)
A lively and interactive discussion with a panel made up of personalities with backgrounds in the arts, politics, policy, management and clinical practice. The panel will be professionally facilitated to ensure that the audience is involved and to bring out the best in our panel members. Key issues that will be covered in the discussion will include how to realise the vision of the inclusion of arts in aged and community care as an essential ingredient or “mainstream” rather than an “extra” and how to move the Government to become engaged and acknowledge the value of the arts in aged and community care as an essential component.
- 3.00pm – 3.45pm **Plenary Session**
- “Conference summation”
Dr Lyn Arnold AO, *Chief Executive, Anglicare SA*
- 3.45pm – 4.10pm **Closing Comments**
Hilary Lee, Dr Dalia Gottlieb Tanaka

SPEAKER BIOGRAPHIES



Colin Bahn
*Chief Executive Officer,
Maurice Zeffert Home*

Colin Bahn's unique strength as CEO of Maurice Zeffert Home is his ability to nurture collective energy and creativity within his team, resulting in the facility's phenomenal reputation as a happy environment highly sought after by aged clients, families and staff.



Patricia Baines

Dr Patricia Baines works as an art therapist for Alzheimer's Australia Tasmania. Using image making she works with individuals who are living with the various stages of dementia and who have been given diverse diagnoses. She runs art therapy groups in residential aged care homes as well as with clients still living at home in the community. Patricia is committed to the engagement of creativity to enable older individuals to live full and meaningful lives.



Sally Francis
*Arts Coordinator, Arts in Health,
Flinders Medical Centre*

Sally Francis is Arts Coordinator, Arts in Health at FMC, one of the largest hospital-based arts in health programs in Australia. Sally has a background in community health, visual arts practice and arts management. She is an advocate for developing government support for arts in health and promoting the development of programs throughout Australia. In 2007 she was awarded a Churchill Fellowship travelling to the UK and Ireland to study arts in health.



Dalia Gottlieb-Tanaka PHD
*Chair of the Society for the Arts
in Dementia Care, Vancouver,
British Columbia*

Dalia Gottlieb-Tanaka earned her PhD from the University of British Columbia in 2006, in the Institute of Health Promotion Research and the Interdisciplinary Studies Program. She graduated in 1976 from the Bezalel Academy of Arts & Design in Jerusalem, and received a Master of Architecture degree in 1980 from the University of British Columbia.

Dalia successfully combines her research with practical work with seniors with dementia. She focuses on creativity, dementia and the therapeutic environment. Dalia is an adjunct professor at the Centre for Population Health Research at UBC. She is trained in assessing creative expression abilities, designing and implementing activity programs and environments that meet cognitive and physical needs of seniors with dementia.

Dalia conceived and developed the award winning The Creative Expression Activities Program for seniors with dementia and continues to deliver presentations and workshops in the US, Canada and Israel. Dalia is also the founder of The Society for the Arts in Dementia Care and is the moving force behind the establishment of additional affiliations in Australia and in Israel.



Alan Graham
*Chief Executive Officer, Aged &
Community Services SA & NT Inc*

Alan spent the first 15 years of his working career in the Western Australian public service, firstly with the State Housing Commission, then heading up the WA Heritage Committee before spending 10 years mostly as the CEO of Regional Development Commissions in the Kimberley, Gascoyne and Pilbara regions of the state.

In mid 1993, Alan moved interstate to take up a position with the Australian Council of National Trusts in Canberra where he represented the national interests of the Australian National Trust movement. In 2005, Alan became the CEO with the National Trust of South Australia in Adelaide and in 2006 became the CEO with Aged and Community Services SA&NT.

Alan is passionate about making a contribution at the community level and over the years has been involved with an array of community and sporting groups acting in senior executive positions.



Hilary Lee MSC OTR
Chair, *The Society for the Arts in Dementia Care (Australia) Inc.*

Hilary Lee is an innovator and researcher in dementia care. She has a background in occupational therapy and has completed a Masters in Science at Curtin University of Technology in Perth, researching the outcomes of the *Spark of Life* Club Program. Hilary now works as the co developer with Dementia Care Australia and supports CEOs and senior management at international health care organisations to achieve their vision and enrich their culture.

Hilary has undertaken many projects in dementia care that have been the first of their kind and has presented her work both nationally and

internationally. These include easing the transition to residential care, the early identification and prevention of depression in people with dementia, a multidisciplinary approach to palliative care as well as a numerous creative expression projects.

Hilary has published articles on her work and recently completed a study developing the Creative-Expressive Abilities Assessment Tool in collaboration with Dr Dalia Gottlieb-Tanaka and Dr Peter Graf at the University of British Columbia.

Hilary is also a leader in the creative arts in dementia and has introduced a new chapter of the Society for the Arts in Dementia Care to Australia and is currently the Chair.



Joanna Jaaniste
B.A. (HONS.), DIP.ED.,
DIP.DRAMATHERAPY, ATHR (DRAMA)

Joanna Jaaniste is a registered dramatherapist with experience in grief work, healing relationships and understanding your biography. She specialises in story work, roleplay and improvisation. Her lively approach is influenced by the work of Carl Jung and Rudolf Steiner. She believes strongly in the power of dramatherapy to assist participants to find new directions for their lives. Joanna's work at two Sydney Area Health Services includes individual and group dramatherapy with clients with

mental health and drug and alcohol issues. She enjoys working with the elderly, and in 2007 directed a performance of arts therapies students at a Successful Ageing conference at the Powerhouse Museum in Sydney, showing how the arts therapies can help aged people. She has contributed a chapter on Dramatherapy to the book *Creative Approaches to Dementia Care*, edited by Trevor Adams and Hilary Lee, which will be published later this year by Palgrave Macmillan. A passionate educator and inspiring speaker, Joanna teaches at tertiary level at various institutions, as well as The Dramatherapy Centre, Sydney of which she is Principal. She has lectured and presented papers at universities and conferences in the USA, Europe and South Africa.



Kirstin Robertson-Gillam
MCOUNS, BA(PSYCH), RN, RMT

Kirstin Robertson-Gillam has been a Music Therapist, Registered Nurse and Counsellor for 26 years with experience in aged care, palliative care, mental health and disabilities.

Kirstin lectured in music therapy at university-based courses in Sydney, Australia and continues to give guest lectures. She has supervised many music therapy students on clinical placement and gives mentor supervision to undergraduate and graduate music therapists and counsellors.

Kirstin created the Spirited Living Program® which utilizes imagery, music and meditation for people of all ages to motivate and improve health.

Kirstin has recently been employed at the Hammond Care Group and at Alzheimers Australia. She has a private creative arts counselling, music and education practice based in the Blue Mountains and Sydney.



**Dr Peter Spitzer
(aka Dr Fruit Loop)**

MB.BS., FACRRM, CHURCHILL FELLOW
Medical Director, Co-Founder,
Humour Foundation

Dr Peter Spitzer is the General Practitioner and Founder of Wintergarden Medical Centre Bowral NSW. A vocationally registered GP, Peter actively uses acupuncture, hypnosis, counselling, psychotherapy, provocative therapy, nutrition, vitamin therapy and herbal medicine, as well as allopathic medicine.

Peter has presented work in the USA, Australian Society of Hypnosis, Sydney University Post-Graduate Pain Management Course, Australian Association of Grief Counsellors, psychology workshops, lecture/keynote to Divisions of General Practice, presentations to the corporate sector and community groups and teaching medical students.

In 2001, Peter was awarded the Churchill Fellowship to study the

international impact of hospital clown units on the health care system.

Peter regularly performs open-heart surgery as Dr Fruit-Loop. His main aim is to infect his patients with joy and laughter. He is involved in the training of Clown Doctors in hospital issues and establishing Clown Doctor Teams. He visited East Timor in 2000 to help people who had been through trauma to find their smiles again.



Yukimi Uchide
Kesen Boke Ichiza Theatre Group

Dr. Yukimi Uchide is currently the chief director of ten facilities run by the Social Welfare Foundation Tennjin-kai, which includes Group Homes, Special Nursing Homes and Day Care Centres. As a part of her social activities, Yukimi has also been running Kesen Boke Ichiza, a volunteer theatre group. The group uses drama to communicate to the local community the issues of dementia, thus enhancing community awareness of people with dementia.

Yukimi's latest research theme is "A Non-verbal Monitoring Method for Emotional Response Designed for People with Advanced Dementia." The research theme reflects the importance of exploring and understanding the inner world of people with dementia.



Jane Verity

OTR, FT, CSP, NLPMP

Jane Verity is the Founder and CEO of Dementia Care Australia and is a world leader and pioneer in the emotional care of people with dementia. She has the vision and courage to challenge the status quo and create a world of dementia care that ignites the human spirit.

Jane has created the *Spark of Life*; a non-pharmacological, systematic approach to dementia care that has been adopted by aged care facilities throughout Australia and overseas. In July 2009 *Spark of Life* received the international IAHS Award for innovation and excellence.

Originally from Denmark and now living in Australia, Jane is an occupational and family therapist, a master practitioner in Neuro Linguistic Programming (NLP) and has earned the highest international accreditation as a professional speaker. She has also been appointed as the Eden Alternative Mentor for all the Nordic countries. She has authored two internationally published books and contributes regularly to national and international dementia journals.

REGISTRATION

	Early Bird ^^ (before 09/09/09)	Regular (after 09/09/09)
Full Member *	\$500.00	\$575.00
Discounted Full Member (3 or more delegates) **	\$425.00	N/A
Full Non Member	\$575.00	\$650.00
Full Concession ^	\$250.00	\$325.00
Day Member	\$300.00	\$300.00
Day Non Member	\$375.00	\$375.00
Workshop 1	\$80.00	\$80.00
Workshop 2	\$80.00	\$80.00
Workshop 3	\$80.00	\$80.00
Workshop 4	\$140.00	\$140.00

* Members of Aged and Community Services Federation Associations, staff from member providers and members of the Society for the Arts in Dementia Care (Australia) Inc. qualify for the "Members Rate".

** If you register 3 or more delegates from the one organisation, the registration will be discounted to \$425.00 per person.

This discounted group registration for 3 or more only applies to the following:

1. Delegates from a single organisation (larger metropolitan provider)
2. Country local/regional 'groupings' (providers from specific regional locations or country towns etc.)
3. Metropolitan 'groupings' of smaller providers

Registrations received under category 2 or 3 must be coordinated and paid for by one organisation. When registering, the lead organisation must identify all other organisations that are party to the 'grouping' arrangement. Only genuinely small metropolitan providers should consider registering under this arrangement.

^ You must hold a current concession card to qualify for the "Concession Rate". Please fax a copy of your concession card to +61 8 8125 2233 when registering.

^^ Early Bird registration must be booked and paid for before or on 9 September 2009 for rates to apply.

INCLUSIONS

The **Full Registration Fee** includes attendance at all Conference sessions, the Arts Exhibition Opening, morning teas, lunches and afternoon teas on the Conference days, a satchel and program handbook. As there is no formal Conference dinner, we encourage you to arrange your own networking opportunities after the Arts Exhibition Opening on Thursday 22 October.

The **Day Registration Fee** includes attendance at the Conference sessions, morning and afternoon tea and lunch on the nominated day, a satchel and program handbook. Attendance at the Arts Exhibition Opening must be booked separately and will incur an additional fee.



SUGGESTED DINING PRECINCTS

We encourage delegates to network over dinners in the following Adelaide destinations:

The Parade, Norwood

A hub of cosy cafes and Mediterranean cuisine.

Gouger Street, Adelaide

Along with the best Asian cuisine in town Adelaide's Chinatown precinct also boasts great steak and seafood restaurants.

Holdfast Shores, Glenelg

A scenic tram ride down to this Bayside suburb offers endless dining options.

Rundle Street, East End, Adelaide

The true 'latte' crowd of Adelaide gathers here for great coffee and great dining.

Payment of Registration Fees

Payment must accompany all registration forms and may be made by credit card or cheque payable to 'All Occasions Group Trust Account No. 2' or by electronic funds transfer: Commonwealth Bank, BSB: 065 112, Account number: 1016 3929. To allow us to identify your payment, please enter your surname as the statement reference and a remittance advice must also be forwarded by email, mail or fax.

Please Note: Full payment is required prior to the commencement of the Conference. Admission to the Conference and all Social Functions will be refused if payment has not been received.

Confirmation of Registration

Your registration will be acknowledged in writing with confirmation of your requirements according to your registration form. You will also receive a Tax Invoice.

Conference Registration Desk

All delegates must register to attend the Conference. The registration and information desk will be located in the main foyer of the Adelaide Convention Centre and will be open during the following hours:

Wednesday 21 October 2009	4.00pm – 5.00pm
Thursday 22 October 2009	8.00am – 5.00pm
Friday 23 October 2009	8.00am – 4.00pm

Name Badges

Sponsored by Domiciliary Care SA.

Domiciliary Care SA

All delegates, sponsors and exhibitors will be issued with a name badge at registration. Admittance to all sessions and the Arts Exhibition Launch will require presentation of your badge.

Cancellation Policy

Registration: Delegates who, after registering, find themselves unable to attend the Conference are welcome to nominate a substitute delegate and must inform the Conference Organiser in writing. A refund of registration fees, less a cancellation fee of \$110.00 (inc GST) will be made if received by 22 September 2009. Registration cancellations received less than 30 days and up to seven days prior to the Conference will receive a 50% refund. No refunds will be given for registration cancellations received within seven days of the Conference.

Arts Exhibition Opening Tickets: Regrettably, additional Arts Exhibition Opening tickets will not be refunded if participation is cancelled less than 48 hours prior to the function.

Accommodation: One night's deposit is required to confirm your booking. The remaining nights accommodation and any incidentals will be payable by you upon check-out. Deposit refunds are at the discretion of the hotel. All cancellations must be sent in writing, either by email, fax or mail, to All Occasions Management.

SOCIAL PROGRAM

Arts Exhibition Opening

Date: Thursday, 22 October 2009
Time: 5.45pm – 7.30pm
Venue: Hall G, Adelaide Convention Centre
Cost: Included in Full Registration fee. Additional tickets are \$45.00 per ticket.



Government of South Australia
Arts SA

We are excited to be hosting the Creative Arts Exhibition as part of the 4th International Conference on Creative Expression, Communication and Dementia. Our exhibition aims to showcase the diversity of visual arts and to focus on the creative

expression of older persons reflective of their life experiences and culture backgrounds.

The exhibition opening is proudly supported by Flinders Medical Centre, Marra Dreaming Indigenous Arts, Aldersgate (Uniting Care Wesley Adelaide aged care facility), Helping Hand Aged Care, ECH Inc. and the Richard Llewellyn Arts & Disability Trust.

The Arts Exhibition Opening will be held at the Adelaide Convention Centre on Thursday 22nd October 2009 at 5.45pm, straight after the first conference day. It will provide a great opportunity to showcase a broad range of artworks by older persons living within community, residential aged care, participants

of day programs and patients of hospitals.

The Arts Exhibition Opening will feature a welcome by Minister Rankine, guest speaker Russell Starke, OAM, Director of Greenhill Galleries Adelaide and performance by the Tutti Ensemble. Come and celebrate the lives of these artists as they share their lives in a rich, wonderful way!



Kesen Boke Ichiza Theatre Group

Date: Thursday, 22 October 2009
Time: 4.10pm – 5.40pm
Venue: Hall G, Adelaide Convention Centre

This theatre group formed in 1994 under the initiative of the staff of the Kesen Day Service Centre, a dementia-specific day care centre located in the City of Ofunato, Iwate Prefecture in Japan. The group was joined by a variety of volunteers including local home helpers, traditional folk singers, English conversation teachers and so forth, who were keen to promote a better understanding of dementia.

'Our aim is to go out into the community and promote a better understanding of dementia and its related issues through comical sketches. Such visual means, we believe, are far more effective than any lectures in helping the community be more aware of various issues related to dementia. Our motto "Let's promote a better understanding of dementia!" represents the three appeals we would like to make to the community. The first is to remove prejudice against dementia by promoting the idea that, when we relate to them well, elderly people with dementia are not much different from other elderly people except that they have slightly unusual personalities. The second is to bring them out into the community because there are limits to the care that their own family alone can provide. And the third is to encourage people to consider dementia as their own issue. The whole community will come to grips with the issue of dementia when everyone seriously considers what it would be like if they themselves or their relatives have dementia.'



ACCOMMODATION

Accommodation has been reserved at the hotels listed on page 15 with special Conference rates when booked through All Occasions Management. Accommodation rooms are limited and allocation will be strictly on first-come first-serve basis. As this is a busy time in Adelaide we encourage you to book your accommodation as soon as possible to avoid disappointment.

Booking and Deposit

To make a booking please complete the relevant section on the registration form and forward an amount equal to one night's accommodation rate, to All Occasions Management. Amounts sent greater than the first night's deposit for accommodation will be returned. Delegates will then be responsible for settling their final account with the hotel at check out.

Arrival Time

Hotel check in time is 2.00pm. If you arrive prior to this time your room may not be available. To guarantee a room for an early arrival you will need to book for the previous night.

Late Arrivals

Please indicate on your booking form or notify All Occasions Management in writing if you will arrive at your hotel after 6.00pm on the day of arrival. Failure to do so may result in your room being released.

The accommodation deposit will be forfeited should you not arrive on the date for which you have booked. In this instance, your subsequent night's accommodation will be cancelled and may be re-sold without notice.

Check Out

Check out time is strictly 10.00am unless otherwise indicated. Late check out will result in the hotel's daily rate being charged.

Rates and Terminology

All rates are in Australian dollars inclusive of GST and are for room only unless indicated otherwise. All rates refer to single, double or twin share unless otherwise indicated.

'Single' a single occupancy room

'Double' a room with one double or queen bed

'Twin' a room with two beds

ALTERATIONS AND CANCELLATIONS

Alterations or cancellation of hotel accommodation must be sent in writing to All Occasions Management, not to the hotel. Cancellations with less than seven days notice given may incur a penalty. This is at the discretion of the hotel.

TERMS AND CONDITIONS

The accommodation availability and prices shown in this registration brochure are current at the time of publication; however, they are subject to change without notice in accordance with the terms and conditions of each supplier. 4th International Creative Expression, Communication and Dementia (CECD) and Creative Ageing Conference and All Occasions Management accept no responsibility for any additional costs or inconvenience incurred.

1. **Mercure Grosvenor Hotel** ★★★★★
North Terrace, Adelaide SA 5000
Telephone: +61 8 8407 8888
Facsimile: +61 8 8407 8866
\$205 – Standard Room per night
2. **Holiday Inn Adelaide** ★★★★★
65 Hindley Street, Adelaide SA 5000
Telephone: +61 1800 899 960
Facsimile: +61 8 8237 3800
\$210 – Standard Deluxe Room per night
3. **Miller Apartment** ★★★★★
16 Hindley Street, Adelaide SA 5000
Telephone: +61 8 8410 1888
Facsimile: +61 8 8212 9480
\$185 – One Bedroom Deluxe Apartment per night
4. **Oaks Embassy** ★★★★★
96 North Terrace, Adelaide SA 5000
Telephone: +61 8 8124 9900
Facsimile: +61 8 8124 9901
\$187 – One Bedroom Deluxe Apartment per night
\$219 – Two Bedroom Deluxe Apartment per night
5. **Sebel Playford Hotel** ★★★★★
120 North Terrace, Adelaide SA 5000
Telephone: +61 8 8213 8888
Facsimile: +61 8 8213 8833
\$239 – Deluxe Guestroom per night
6. **Stamford Plaza** ★★★★★
150 North Terrace, Adelaide SA 5000
Telephone: +61 8 8461 1111
Facsimile: +61 8 8231 7572
\$225 – Superior Room per night



ACCOMMODATION MAP



1. Mercure Grosvenor Hotel
2. Holiday Inn
3. Miller Apartment
4. Oaks Embassy Adelaide
5. Sebel Playford Hotel
6. Stamford Plaza Adelaide

--- Tramline
The tram is free within city limits,
or can be taken to beachside Glenelg.

TRAVEL

Are you travelling to the 4th International Creative Expression, Communication and Dementia (CECD) and Creative Ageing Conference in Adelaide? Do you need assistance with flights, car hire or pre and post touring? Take a look at the options on the next page as a sample of what we can arrange in the Adelaide area. If you would like assistance with these or any other travel options don't hesitate to contact Travelscene at All Occasions. Working alongside our Conferencing department allows you to focus on your destination, while we manage the journey. We are a member of the Travelscene American Express network, so you can be sure that you are getting the best possible deals.

For bookings, please contact:



ALL OCCASIONS
TRAVEL

Travelscene at All Occasions

41 Anderson Street
Thebarton SA 5031
Telephone: +61 8 8125 2222
Facsimile: +61 8 8125 2233
Email: travel@aomevents.com

4TH
INTERNATIONAL
CONFERENCE
ON CREATIVE
EXPRESSION,
COMMUNICATION
AND DEMENTIA



The following Conference tours have been developed as a guide. All Occasions Travel can customise a tour that will suit your requirements.

Please indicate on the registration form if you would like further information on tour options and a consultant will contact you.

Tour ideas include:

Barossa Valley Experience **DAY TOUR**

Spend a day in the Barossa Valley. Enjoy four winery visits and tastings; see the world's largest rocking horse and Toy Factory, Angas Park Dried Fruits and the Whispering Wall.

Duration:

8 hours, departing daily at 8.45am

Inclusions:

Return transfers from most Adelaide hotels and a three course lunch at the Nuriootpa Vine Inn

Price:

From \$70.00 per person

Conditions:

Minimum of 2 people, maximum of 21 people

Barossa Valley Sensational **DAY TOUR**

Saturday 24 – Sunday 25
October 2009

This unique full day tour provides the opportunity to get "hands-on" with interactive and fun activities. We visit some of Australia's, and the world's, best loved wineries. Make your own Blend at Penfolds Winery (enclosed footwear required). At Saltram Estate, enjoy a two course Luncheon with wine. Enjoy an exclusive tasting at Wolf Blass, and take a guided walking tour through the historic winery and cellars of Seppeltsfield.

Duration:

8 hours, departing on Saturday 24 October at 8.45am

Inclusions:

Return transfers from most Adelaide hotels and a two course lunch Saltram Estate

Price:

From \$188.00 per person

Conditions:

Minimum of 4 people, maximum of 21 people

Kangaroo Island 'In Style' **2 DAY TOUR**

Saturday 24 – Sunday 25
October 2009

Travel by coach and Ferry to Kangaroo Island. Enjoy two full days of touring around one of Australia's best nature based destinations. Tour highlights include: Kelly Hill Caves, Western Kangaroo Island Sanctuary, Flinders Chase National Park, Admiral's Arch, Remarkable Rocks, Seal Bay and more. Stay overnight at the 4 star Kangaroo Island Wilderness Retreat. Watch for the wallabies and possums as you go in for dinner; a two course meal will be served with Kangaroo Island wines.

Duration:

2 days, departing on Saturday 24 October at 6.30am

Inclusions:

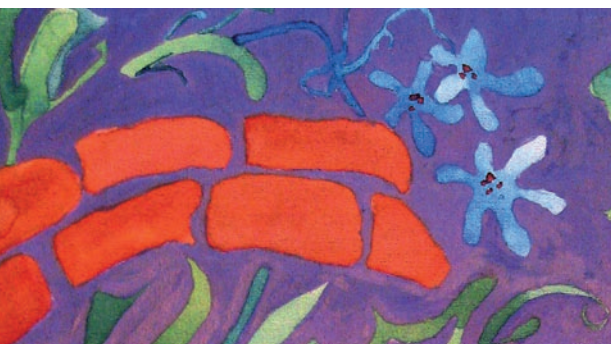
Return coach & ferry, 4 star accommodation overnight and most meals

Price:

From \$890.00 per person (based on twin share)

Conditions:

Minimum numbers apply



**Flinders Ranges
Overnight Escape**
2 DAY TOUR

Escape to the Spectacular Flinders Ranges. Learn about the history of the area in the beautiful Ranges landscape with rugged mountains, scenic gorges, ruins of early settlement and abundant wildlife. Tour highlights include: Wadlata Outback Centre, lunch in Quorn, Yourambulla Caves tour to see ancient Aboriginal paintings, Gorge tour with afternoon tea in Brachina Gorge, Wilpena Resort with free time, dinner and deluxe accommodation. On day two visit Arkaroo Rock or Sacred Canyon to see ancient Aboriginal paintings and hear Adnyamthanha Dreaming stories. Enjoy morning tea in a picturesque creek bed. View magnificent geological rock formations and see Yellow Footed Rock wallabies and other wildlife. Visit Hawker and the Wilpena Panorama Gallery to see a magnificent 360 degree painting of Wilpena Pound. Lunch at Hawker. Visit Kanyaka Ruins (time permitting).

Duration:

2 days, departing daily
at 7.30am

Inclusions:

Luxury accommodation overnight at Wilpena Pound, entry fees to Wadlata Outback Centre, National Park and Wilpena Panorama Gallery and most meals.

Price:

From \$955.00 per person

Conditions:

Minimum numbers apply

**2 Nights Accommodation
Oaks Plaza Pier, Glenelg**
2 NIGHTS
23 – 25 October 2009

Superbly located on the beachfront of Adelaide's popular seaside suburb, Glenelg, Oaks Plaza Pier offers sensational ocean views and is adjacent to the popular Holdfast Marina and is minutes from the famous Jetty Road precinct. The hotel's luxurious facilities include an indoor heated lap pool, spa, plunge pool, sauna, steam room and a fully equipped gymnasium. 4.5 star property.

Price:

From \$220.00 per room,
twin share in an Ocean View
1 Bedroom Apartment
(room only)

**2 Nights Accommodation
Stamford Grand, Glenelg**
2 NIGHTS
23 – 25 October 2009

Right on the beachfront at Glenelg and the Adelaide City-Bay Tram Service stop at the front door. Located in the midst of restaurants, shops and cafes. A huge range of recreational facilities are just outside the door. 4.5 star property.

Price:

From \$250.00 per room, twin
share in a Superior City Room
(room only)

GENERAL INFORMATION

Car Parking

Car parking is available at the Adelaide Convention Centre, in both the Exhibition Car Park and the Riverbank Car Park. All day early bird parking is approximately \$9.00, with entry between 5.00am and 9.30am and exit by 6.30pm. Other public car parks are situated on North Terrace.

Temperature

For the month of October, Adelaide's mean maximum temperature is 21°C, the mean minimum is 10°C.

Dress Standards

Smart casual dress is the required dress standard for the Conference sessions and the Arts Exhibition Opening.

Local Transport

The Adelaide Airport is situated 7km from the central business district and major hotels. An Airport City minibus runs between the airport and major hotels every half hour from 7.00am – 10.00pm (hourly on weekends) at a cost of approximately \$10.00.

A taxi from the airport to the city is approximately \$15.00. Some taxi companies are:

Suburban Taxi

Telephone: 131 008

Yellow Cabs

Telephone: 132 227

Adelaide Independent Taxi

Telephone: 132 211

Adelaide Metro Trams run from Glenelg to North Terrace outside the Adelaide Convention Centre. For more information please call, 8210 1000 or visit the website www.adelaidemetro.com.au.

Privacy Policy

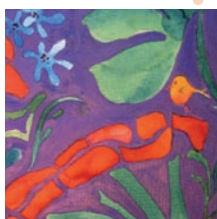
In accordance with the requirements of the Australian Privacy Act 2000, the All Occasions Group (encompassing All Occasions Management and All Occasions Travel) complies with such legislation which is designed to protect the rights of the individual to privacy of their information. All information collected with respect to your registration for participation in this Conference will only be used for the purposes of planning, conduct of the event or communication regarding future events. These details may be made available to parties directly related to the Conference including but not limited to the All Occasions Group, venues, accommodation and travel providers (for the purposes of room/travel bookings and Conference options), key sponsors (subject to strict conditions) and other related parties as deemed necessary. It is also usual practice to produce a 'Delegate List' of attendees at the Conference and to include the individual's details in such a list. By completing this registration form, you acknowledge that the details supplied by you may be used for the above purposes. It is your responsibility to ensure that all information provided to the All Occasions Group is accurate and kept up to date. To access or update your information, please email or fax the All Occasions Group on conference@aomevents.com or (08) 8125 2233.

Liability/Insurance

In the event of industrial disruptions or natural disasters, the Society for the Arts in Dementia Care (Australia) Inc., Aged and Community Services SA & NT Inc., the Organising Committee, and the All Occasions Group cannot accept responsibility for any financial or other losses incurred by the delegates. Aged and Community Services SA & NT, the Organising Committee and the All Occasions Group take no responsibility for injury or damage to persons or property occurring during the Conference. All insurance, including medical cover, or expenses incurred in the event of the cancellation of the Conference is the individual delegate's responsibility. Attendees are encouraged to choose a travel insurance policy that includes loss of fees/deposits through cancellation of your participation in the Conference, or through the cancellation of the Conference itself, loss of airfares for any reason, medical expenses, loss or damage to personal property, additional expenses and repatriation should travel arrangements have to be altered. The Conference Secretariat will take no responsibility for any participant failing to insure.

Thursday 22 – Friday 23 October 2009
Adelaide Convention Centre,
South Australia

4th International Conference
on Creative Expression,
Communication and Dementia



ARTS AGEING
and **CREATIVITY**
UNLOCKING THE POTENTIAL

Hosted by

The Society for the Arts in
Dementia Care (Australia) Inc

Aged and Community
Services SA & NT Inc

REGISTRATION FORM

PLEASE ACCEPT THE FORM AS A TAX INVOICE FROM ACS SA&NT.

ALL AMOUNTS ARE IN AUSTRALIAN DOLLARS UNLESS OTHERWISE INDICATED AND ARE GST INCLUSIVE.

SAVE TIME AND REGISTER ONLINE AT WWW.ALLOCCASIONSGROUP.COM/CECD09.

IF MORE THAN ONE DELEGATE, PLEASE PHOTOCOPY THE BLANK FORM AND COMPLETE.

ABN: 68 220 832 293

Delegate Details

Title _____

Given Name _____

Last Name _____

Preferred name for badge _____

Position _____

Organisation _____

Address _____ City _____

State _____ Postcode _____

Telephone _____ Facsimile _____

Mobile _____

Email (all information and updates regarding the Conference will be sent to this address) _____

Any special requirements? (e.g. dietary, wheelchair access) _____

All Occasions Group uses commercial electronic messages (i.e. email updates, newsletter etc.) to keep delegates, sponsors and accompanying partners informed on both current and future events. You will automatically be kept informed of Conference and accommodation specials.

☐ No, I would not like to be kept informed of Conferences, travel and accommodation specials and/or holiday/travel prizes.

Privacy

In registering for this Conference relevant details will be incorporated into a delegate list. Your details (name, state, organisation, email and phone number) may be made available to parties directly related to the Conference including All Occasions Management, All Occasions Travel, venues and accommodation providers (for the purposes of room bookings and Conference options), sponsors, exhibitors (subject to strict conditions) and parties associated with related Conferences. By completing the registration form, you acknowledge that the details supplied by you may be used for the above purposes. Should you not wish for your details to be used for these purposes, please contact All Occasions Management as soon as possible.

☐ Please do not include my details on the delegate list.

Registration Fees

All fees are in Australian dollars and are GST inclusive.

	Early Bird ^^ (before 09/09/09)	Regular (after 09/09/09)
Full Member *	<input type="checkbox"/> \$500.00	<input type="checkbox"/> \$575.00
Discounted Full Member (3 or more delegates) **	<input type="checkbox"/> \$425.00	<input type="checkbox"/> N/A
Full Non Member	<input type="checkbox"/> \$575.00	<input type="checkbox"/> \$650.00
Full Concession ^	<input type="checkbox"/> \$250.00	<input type="checkbox"/> \$325.00
Day Member	<input type="checkbox"/> \$300.00	<input type="checkbox"/> \$300.00
Day Non Member	<input type="checkbox"/> \$375.00	<input type="checkbox"/> \$375.00
Workshop 1	<input type="checkbox"/> \$80.00	<input type="checkbox"/> \$80.00
Workshop 2	<input type="checkbox"/> \$80.00	<input type="checkbox"/> \$80.00
Workshop 3	<input type="checkbox"/> \$80.00	<input type="checkbox"/> \$80.00
Workshop 4	<input type="checkbox"/> \$140.00	<input type="checkbox"/> \$140.00

* Members of Aged and Community Services Federation Associations, staff from member providers and members of the Society for the Arts in Dementia Care (Australia) Inc. qualify for the "Members Rate".

** If you register 3 or more delegates from the one organisation, the registration will be discounted to \$425.00 per person.

This discounted group registration for 3 or more only applies to the following:

1. Delegates from a single organisation (larger metropolitan provider)
2. Country local/regional 'groupings'
(providers from specific regional locations or country towns etc)
3. Metropolitan 'groupings' of smaller providers

Registrations received under category 2 or 3 must be coordinated and paid for by one organisation. When registering, the lead organisation must identify all other organisations that are party to the 'grouping' arrangement. Only genuinely small metropolitan providers should consider registering under this arrangement.

^ You must hold a current concession card to qualify for the "Concession Rate". Please fax a copy of your concession card to +61 8 8125 2233 when registering.

^^ Early Bird registration must be booked and paid for before or on 9 September 2009 for rates to apply.

Social Function

To assist with catering please indicate your intentions.
(Failure to do so will be registered as non-attendance.)

Yes, I/we will attend the:

☐ Arts Exhibition Opening on Thursday, 22 October 2009
(inclusive for Full registrations)

☐ Arts Exhibition Opening on Thursday, 22 October 2009
(additional tickets, day registrations) – \$45.00 per ticket

Number of tickets required _____

Accommodation Options

All Occasions Management has reserved accommodation at a range of hotels. To access these rooms at the Conference rate, all rooms must be booked through All Occasions Management. Rooms will be allocated strictly on first-come-first-serve basis.

Arrival Date _____

Departure Date _____

Estimated Time of Arrival _____

Name of person(s) sharing _____

☐ Single ☐ Double ☐ Twin &/or
☐ Smoking ☐ Non-Smoking

Please indicate your hotel preference (1,2,3) in the boxes below. All rates are room only per night and GST inclusive.

☐ 1. *Mercure Grosvenor Hotel*
\$205 – Standard Room per night

☐ 2. *Holiday Inn Adelaide*
\$210 – Standard Deluxe Room per night

☐ 3. *Miller Apartment*
\$185 – One Bedroom Deluxe Apartment per night

☐ 4. *Oaks Embassy*
\$187 – One Bedroom Deluxe Apartment per night
☐ \$219 – Two Bedroom Deluxe Apartment per night

☐ 5. *Sebel Playford Hotel*
\$239 – Deluxe Guestroom per night

☐ 6. *Stamford Plaza*
\$225 – Superior Room per night

Accommodation Alterations and Cancellations

Alterations or cancellation of hotel accommodation must be sent in writing to All Occasions Management, not to the hotel.

Travel Options

All Occasions Travel can make flight bookings for you. Please complete the details below and a travel consultant will contact you to complete the booking. Upon booking an invoice will be sent to you for payment.

Desired Departure Date

Desired Departure Time

Desired Return Date

Desired Return Time

Frequent Flyer number

Number of Persons

Please provide me with further information about:

- ☐ Car Hire
☐ Travel Insurance
☐ Pre and Post Conference
 Tour options

Cancellation Policy and Other Policies

I have read and I agree, to all the cancellation policy on page 12 and all other policies outlined within this registration brochure and registration form.

Signature:

Date:

Payment

Registration	\$
Social Function	\$
Accommodation (equal to one night's deposit only)	\$
Total	\$

Please Note: FULL PAYMENT is required prior to the commencement of the Conference. Admission to the Conference and all related functions will be refused if payment has not been received.

Payment or payment advice must accompany this form and may be made by:

- ☐ Cheque or money order payable to
 'All Occasions Group Trust Account No. 2'
☐ Electronic Funds Transfer to Commonwealth Bank Australia, BSB 065 112, Account Number 1016 3929

* To allow us to identify your EFT payment, please enter your surname as the Statement reference. A remittance advice must also be forwarded by email or fax, to All Occasions Management.

- ☐ Please debit my credit card for the above total
☐ MasterCard ☐ Visa ☐ Diners Club ☐ AMEX

Card holder's name as it appears on the card:

Card Number: | | | | | | | | | | | | | | | |

Expiry Date:

Signature:

Please note that debits to your credit card will appear as "All Occasions Group" on your statement.

PLEASE RETURN THIS FORM TO:

CECD09

All Occasions Management
 41 Anderson Street, Thebarton SA 5031
 Telephone: +61 8 8125 2200
 Facsimile: +61 8 8125 2233
 Email: shanna@aomevents.com
 www.alloccasionsgroup.com/CECD09



ALL OCCASIONS
GROUP

FOCUS ON YOUR DESTINATION,
WE MANAGE THE JOURNEY.

Conferences + Events
 Corporate + Group Travel
 Speakers + Entertainers
 Exhibitions + Tradeshows

The Conference will involve and engage aged care managers and executives, practitioners (occupational & diversional therapists, lifestyle coordinators, allied health and nurses), performing artists, seniors, international experts and researchers as well as the broader community to discuss the positive value of active participation in the creative arts for older people. It will also provide an excellent opportunity for delegates to exchange ideas and insights about creative approaches that can improve the lives of older people.

ARTS AGEING and CREATIVITY

UNLOCKING THE POTENTIAL

Major Sponsors



Australian Government
Department of Health and Ageing

**HEALTH
SUPER**



Government of South Australia
Arts SA



Domiciliary Care SA



Arts Access Australia

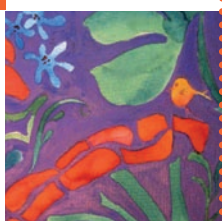


Other Sponsors



4TH
INTERNATIONAL
CONFERENCE
ON CREATIVE
EXPRESSION,
COMMUNICATION
AND DEMENTIA

• 4th International Conference
• on Creative Expression,
• Communication and Dementia



ARTS AGEING
and CREATIVITY
UNLOCKING THE POTENTIAL

• Hosted by

• The Society for the Arts in Aged Care and Community
• Dementia Care (Australia) Inc Services SA & NT Inc